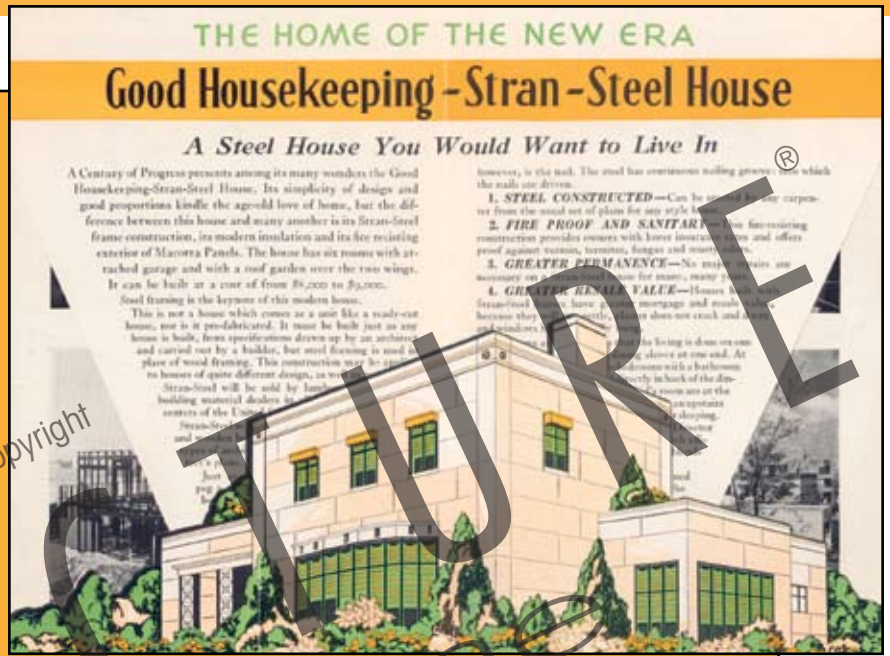


History of Cold Formed Steel

By Don Allen, P.E.

Although many consider cold-formed steel framing to be a “new” construction product, it actually has been used in North America for over 100 years. Use of cold-formed steel members for construction of buildings started in both the United States and England in the 1850s. Use was largely experimental, and limited to a few basic structures. During the 1849 California Gold Rush, a roofer from New York, Peter Naylor, advertised “portable iron houses for California.” The advertisement stated that the iron was grooved so all parts could slide together. According to the ad, “20- x 15- (foot) homes could be built in less than a day, were cheaper than wood, fireproof, and more comfortable than a tent.” Mr. Naylor used metal roofing in his practice in New York, so undoubtedly many of the components of these “iron houses” were actually cold-formed steel. In the 1920s and 30s, acceptance of cold-formed steel as a construction material was still limited, since there was not an adequate design standard and no information on the use of the material in the building codes.



Postcard advertising Stran-Steel house at the 1933 Century of Progress World's Fair

In 1933, the Chicago Century of Progress Exposition (World's Fair) featured a “home of the future,” completely framed with steel. Architect Howard T. Fisher was responsible for the development of this home, based on his research into the use of steel in railroad cars and other manufacturing industries. According to *Fortune Magazine* (April 1933,) Fisher approached the Pullman Car Corporation and said, “You have had more experience with prefabricated housing in metal than any other manufacturer. Help us learn

how to build homes without wheels.” He did the same with other construction product companies. By mid-1932, he had developed his plan and founded *General House, Inc.* The *New York Times* reported, “Just as Henry Ford tapped a totally undeveloped field for automobile sales, so General Houses hopes to tap a totally undeveloped field for housing when it offers first class shelter on the installment plan for \$30 a month. The houses will be adaptable to exchange for newer and better models and can be set up or taken down in four days.” According to the 1936 General Homes catalog, “Approximately two million people visited our display house within five months at the 1933 Century of Progress Exhibition.” Unfortunately, the catalog gave few details about the structural system that was used. Despite the relatively low price, good terms, and apparent popularity at the Chicago Exposition, the company was out of business by the beginning of World War II.

Also during the 1933 Chicago World's Fair, Armco Steel Corporation introduced the first standing seam metal roofing panel. During and after World War II, the metal building industry and the steel framing industry began to differentiate, diverge, and grow. While framing found its way into homes such

as Lustron, metal buildings used roofing, siding, and sheet products to develop storage buildings, Quonset Huts, and similar structures for barracks, hangars, and other facilities that required rapid, lightweight, and strong construction.

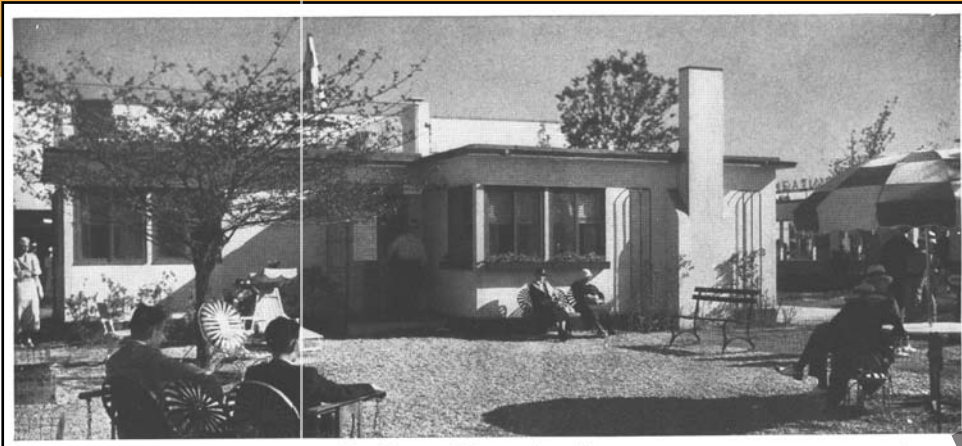
In the 1940s, *Lustron Homes* built and sold almost 2500 steel-framed homes, with not only the framing, but finishes, cabinets, and furniture all made from steel. Lustron's founder, Carl Strandlund, originally planned to manufacture porcelain-



Souvenir book cover from the Chicago World's Fair



Homes featured in the “Homes of Tomorrow Exposition” at the 1933 Chicago World's Fair



"House of Tomorrow" built by Howard Fisher's General House, Inc. for the 1933 Chicago World's Fair

enamel coated cold-formed steel panels for the exterior cladding on service stations. In 1945, there were still post-war restrictions on the use of steel, so Strandlund traveled to Washington to see if he could receive an exemption. He did not get what he came for, but learned that the government was very interested in providing attractive, permanent, affordable housing for the soldiers returning from World War II. Strandlund envisioned homes built in the assembly-line process of the automobile, using the steel panels for framing, cladding, trusses, and even the roof tiles. He developed his business plan and began taking orders for homes in 1946. In 1947, he requested and obtained federal loans totaling over \$33 million. He leased an aircraft hangar from the U. S. Navy in Columbus, Ohio, and started building Lustron homes. Although over 20,000 home orders were received for homes between 1946 and 1948, only 2,498 homes were delivered and constructed, and the company eventually went into bankruptcy.

With all this work being done in the residential marketplace, commercial and indus-

trial applications of cold-formed steel framing were being tried, although without as much fanfare and marketing as the residential efforts. One example is the Virginia Baptist Hospital, built around 1925 in Lynchburg, Virginia. The walls were loadbearing masonry, but the floor system was framed with double back-to-back cold-formed steel lipped channels. These joists were shown with a JJ (back-to-back channel) symbol on the drawings, at 19 inches on center, and overlaid with metal lath supporting a cement-based fill. Each channel, made from 0.073-inch thick steel, is 8 inches deep, 2¼ inches wide, with a ½-inch stiffening lip. According to Chuck Greene, P. E. of Nolen Frisa Associates, the joists should have been adequate to carry the initial loads and spans, based on current analysis techniques. Greene engineered a recent renovation to the structure and said that, for the most part, the joists are still performing well and have plenty of continued service life. A recent site observation during this renovation confirmed this: these joists from the "roaring twenties" are still supporting loads, over 80 years later.

Although requirements for hot-rolled structural steel had already been adopted into building codes by the 1930s, there were no provisions for cold-formed steel. Key differences between hot-rolled and cold-rolled steel made it impractical to apply hot-rolled provisions to cold-formed structural products. First, cold-forming the material allowed for shapes that differed greatly from the traditional "I beams" and unlipped channels: cold-formed steel shapes have consistent thickness across their cross section, no tapered flanges, and an inside and outside bend radius at corners. Second, structural behavior of the members is much different. Due to the thin shape, cold-formed steel members initiate local buckling with very little loading in some configurations. However, after this initial buckling, members can continue to take more and more load before the member yields and fails.

continued on next page



The Stran-Steel Good Housekeeping House is pictured directly above

TAKE SPEED OF CONSTRUCTION TO A HIGHER LEVEL.

Multi-story residential construction has taken a quantum leap forward with the Girder-Slab® System. Forget the lag time and weather issues of cast-in-place concrete. The Girder-Slab® System requires less skilled labor on the job than other systems, provides proven engineering and the fastest construction speed in mid- and high-rise residential construction.

The Girder-Slab® System features:

- Low floor-to-floor heights
- Reduced structure weight
- Assembled-in-place technology
- Code compliance
- Flexible floor plans

Choose your own subs

Visit www.girder-slab.com for a FREE DVD on this innovative building system.

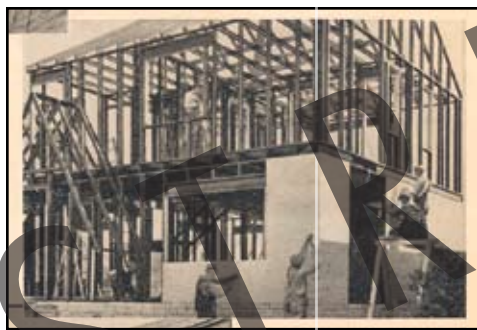


www.girder-slab.com
or call toll-free
888-478-1100

GIRDER SLAB®

COMPOSITE STEEL AND PRECAST SYSTEM

The American Iron and Steel Institute (AISI), originally founded in 1855 as the American Iron Association, saw the need for a design standard for cold-formed steel in construction. In February of 1939, AISI's Committee on Building Codes sponsored a research project at Cornell University, to develop information specifically for a design specification. George Winter, often referred to as "the father of cold-formed steel," led this effort at Cornell and continued cold-formed steel research there until his retirement in 1975. Winter's first four published research reports for AISI, from 1940, 1943, 1944, and 1946, were compiled into the first (1946) edition of the *AISI Specification for the Design of Light Gauge Steel Structural Members*.



The Good Housekeeping Stran-Steel House was also constructed at the 1933 Chicago World's Fair and featured in Good Housekeeping Magazine. The combination of double back-to-back channel members and a special nail design provided a "nailable" steel for attachment to sheathing and finishes, this was similar to the innovation that Stran-Steel added to the Quonset hut of World-War II, allowing the structures to be erected quickly and easily by untrained military crews.

This first specification contained six sections: General, Design Procedure, Allowable Design Stresses, Connections, Design of Braced Wall Studs, and Tests. Applicability was limited to "steel sheet or strip less than 3/16-inch in thickness." The yield point of steel used ranged from 25 ksi to 33 ksi, and the base material permitted for forming sections was limited to products referenced in ASTM specifications A245 and A246. Compared to today's Specification, data was very limited, but it was a start. Designers and specifiers now had a code-adopted standard from which they could specify material, and manufacturers could develop material and property tables based on standard methods. However, the industry still had a long way to go: the information on connections was limited to welds, and there was no data on the design of members with web or flange

holes. The basic design stress was based on a safety factor of 1.85; relatively high compared to the 1.65 value published in the American Institute for Steel Construction's specification during the same era. In the 1960 version of the AISI Specification, this basic design stress safety factor was reduced from 1.85 to 1.65, to be in line with the other steel specifications.

At the same time that cold-formed steel framing was gaining ground as a construction material, the use of gypsum board was growing. Patented in 1894 by Augustine Sackett, the original gypsum board was brittle, rough, combustible, and did not have a smooth layer for finish. However, over the next 50 years improvements were made, including replacing the wool felt paper layers with paper, air-entrainment to make the product lighter and less brittle, and development of "type X" board for fire resistance. By 1955, half of all new homes were built using gypsum wallboard, and the other half was built using gypsum lath and plaster. Looking toward the commercial market, the Gypsum Association and its member companies had run a series of fire tests and in 1931 published a manual on fire resistance. There was a desire to develop non-combustible systems to prevent disasters in high-rise structures, such as the 1946 Winecoff Hotel fire in Atlanta where 119 people died. Loadbearing masonry partitions had been used, but they were heavy, required large amounts of labor and water, and left messy mortar droppings from construction. Because the masonry partitions could be plastered directly, they created no market demand for the gypsum board product. The gypsum companies went to work to develop a non-combustible substrate that could support partitions made from gypsum board, and steel framing appeared to be the answer. Some of the first metal stud walls were made from unlippped channels, with metal lath wire-tied to the flanges. However, there was not an easy method to nail the gypsum board to the studs. United States Gypsum Company developed a nailable stud system called Trussteel. Advertised as "the original open-truss design studs for the erection of hollow, fire-resistant partitions... formed from cold-drawn No. 7-ga. Steel wire rods with a tensile strength of 90,000 psi — substantially higher than the hot-rolled sheets from which pressed

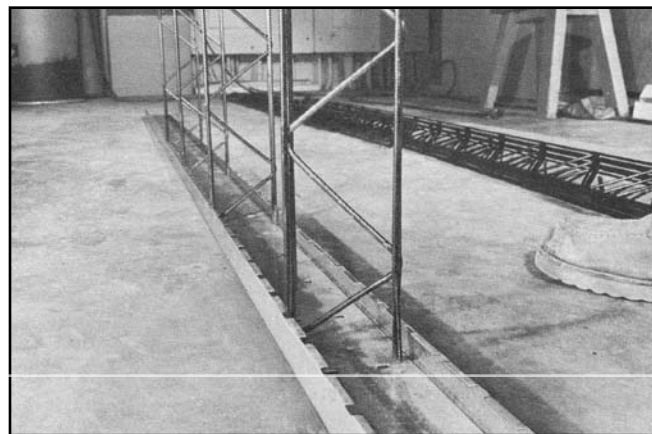


Before the advent of the self-drilling screw, attachment of sheathing to steel framing was difficult and time consuming. Special clips were developed for some applications, after attempts to develop a nailable stud were unsuccessful.

metal and edge angle studs are formed." The initial design was for nails to be installed between the double wires that formed the "chord" of the Trussteel members. However, it was difficult for framers to install the nails in just the right spot to get it between the wires, and double studs had to be installed at panel joints. Clips were eventually used instead of nails for veneer plaster products, but for finishing gypsum board, the clip flanges got in the way.

The gypsum board and steel stud industries were able to find the "silver bullet" for non-combustible partitions: the self-drilling screw. Made from hardened steel, the points of these screws had either a self-piercing "sharp" point, for the thinner steel framing members, or a driller point for thicker steel. These screws, and the parallel development of tools to drive them during the 1950s, created an expanded opportunity for steel framing in the commercial marketplace. Steel framing companies began to pop up across North America.

continued on page 32



Installation of Trussteel "nailable" steel stud. Note that no screws are used for attachment of stud to track. Originally, nails were to be installed between the double wire that formed the flange of the Trussteel stud.



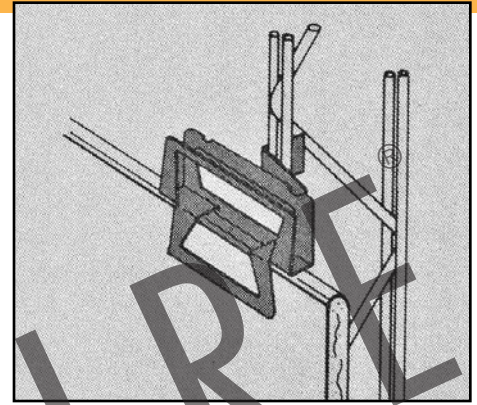
2006 photo of floor joists in Virginia Baptist Hospital during renovation. Metal lath was draped across top flanges of beams and used to support concrete fill.

During the 1960s, these partition applications were expanded to new systems, such as exterior framing with brick veneer, and interior applications such as shaft wall where specially configured studs held fire-resistant gypsum panels in a configuration that could be built from one side. This permitted construction of walls around stair towers and elevator shafts without scaffolding being built up inside the shaft, or the weight or mortar droppings of masonry construction. The first shaft wall system, patented by USG, was first used in the World Trade Center buildings in New York City.

As the steel framing market grew, it became more difficult for architects and engineers to specify a standard product. Most framing members had similar properties, were made to the same ASTM specifications, and had their own span and load tables. But slight differences in the configuration created differences in strength and stiffness, which led to confusion in the marketplace. During the 1990s, two organizations emerged in an attempt to provide better standardization of the product. On the east coast, the National Association of Architectural Metal Manufacturers (NAAMM) formed the Metal Lath and Steel Framing Association. On the West Coast, under the leadership of Neal Peterson, the Metal Stud Manufacturers Association (MSMA) was formed. The MSMA developed a single catalog, with load and span tables that were the same for all of its members. This made it much easier for specifiers and designers. In 2000, these two organizations merged, to form the Steel Stud Manufacturers Association (SSMA). Since 2001, the SSMA has produced span and load tables, based on a standard product no-

menclature and standardized thicknesses and sizes. Also in the mid 1990s, some west coast steel manufacturers realized that many engineers did not understand the complexities or design methodologies of the AISI Specification. To help provide design guidance, technical information, and user-friendly information to engineers, the Light Gauge Steel Engineers Association (LGSEA) was formed in the San Francisco Bay Area in 1994. Starting with only 14 members, the organization had grown to over 800 members in 10 years. In 2005, the organization became a part of the Steel Framing Alliance, and in October, 2006, announced its new name: the Cold-Formed Steel Engineers Institute (CFSEI.) This group still embraces the original mission of the LGSEA: to provide information to engineers and designers for the safe and efficient design of cold-formed steel structures.

The AISI standards development effort did not stand still during this time. Since the 1946 edition of the Specification, nine subsequent versions were issued with updated data and added information for designers. The latest edition, the 2001 *North American Specification for the Design of Cold-Formed Steel Structural Members* with 2004 Addendum, contains provisions that apply in Canada, the United States, and Mexico. Fastening types include bolts, welds, and screws, and provisions are now included for holes in members. In the late 1990s, AISI realized that while the Specification was very comprehensive in covering design information for all types of cold-formed steel structures, special provisions were needed for the more narrow requirements of the steel framing industry. In 1998, the AISI formed a new committee, the Committee on Framing Standards (COFS,) to develop standards specific to steel framing used in light-frame building construction. In their short history, the COFS



Resilient clip TR-1. "Nailable" steel stud. This product was still used in the 1980's.

has successfully developed six standards that have been adopted by the building codes. The General Provisions, Header, Truss, Wall Stud, and Lateral Standards have been adopted by the International Building Code, and the Prescriptive Method and General Provisions Standards have been adopted into the International Residential Code.

The future of steel framing in North America looks promising. The COFS is working to develop its standards into North American versions, with applicability in the U.S., Canada and Mexico. Product Data and Span and Load Table standards are in development, to help engineers continue to specify standard products. At the same time, new products are being developed: truss and wall panel systems, mobile rollforming, Joist and stud systems with large stiffened holes, embossed members, thermally efficient studs, and boxed sections are all being developed or are in production. CFSEI has design guides in development for each of the COFS standards, as well as CAD details, tech notes, and online and live steel



End support of cold-formed steel beam in brick masonry wall, Virginia Baptist Hospital. Construction completed around 1925.

framing design courses. And software developers have released programs that use the provisions of the Specifications and standards to provide rapid, accurate, and in some cases 3-D full-structure Building Information Modeling

that incorporates steel framing member and system design. These new products, publications, code-adopted standards and training opportunities make it easier than ever to design with steel. ■

Don Allen, P.E., currently serves three active roles for the steel industry: Technical Director of the Steel Stud Manufacturers Association, Director of Engineering for the Steel Framing Alliance, and Secretary of the Cold-Formed Steel Engineers Institute. He has worked for a product manufacturer, a specialty engineer, and full-service structural engineering firm before his current affiliation with the steel industry. Don has a special interest in the structural role of materials in sustainable construction, and is a LEED® Accredited Professional. He is a member of ASCE Structural Engineering Institute (SEI) Committee on Sustainability, and the ASCE. Don can be reached by email: dallen@steel framing.org



Sran-Steel House and World's Fair images courtesy of Monica Garcia Brooks, Associate Dean of Libraries, Marshall University, Huntington, West Virginia. brooks@marshall.edu

"The Ensign-Seelinger Home", a Sran-Steel home in Huntington, West Virginia is on the National Register of Historic Homes and owned by Dr. Kathy L. Seelinger.

References

1. Yu, Wei-Wen. *Cold-Formed Steel Design, Third Edition*. 2000, John Wiley & Sons. Page 1
2. Metal Building Manufacturers Association. *50th Anniversary Collectors Edition: a Supplement to Metal Construction News and Metal Architecture*. July, 2006. Page 7.
3. Craftsman Book Company. *Build Smarter with Alternative Materials*. Chapter 4, page 1.
4. Thornton, Rosemary. *Lustron Homes*. The Old House Web. 1998-2006. 20 Aug. 2006 www.oldhouseweb.com/stories/Detailed/12270.shtml
5. Reickert, Judy. *The Story of Lustron Homes*. The Lustron Connection. 20 Aug. 2006 home.earthlink.net/~ronusny/whatlusttwo.html
6. Yu, Wei-Wen, D. S. Wolford and A. L. Johnson. *Golden Anniversary of the AISI Specification*. 13th International specialty conference on Cold-Formed Steel Structures. 1996 St. Louis, MO. Pages 1-3, page 5.
7. Winter, George. *Light Gauge (Thin-Walled) Steel Structures for Building in the U.S.A.* preliminary publication, 4th Congress of the International Association for Bridge and Structural Engineering, 1952. p. 524.
8. The Gypsum Association. *75 Years of Service*. 2005, the Gypsum Association, Washington, DC pages 16, 19, 20.
9. USG Corporation. *Gypsum Construction Handbook, 2nd Edition*. 1982, United States Gypsum. Page 243.